

# 「區區有樽賞」

回收基金：即棄塑膠飲品樽回收網絡建立試驗計劃

## Neighbourhood Bottle Reward Scheme

Recycling Fund: A pilot scheme on the establishment of a single-use plastic beverage bottle recycling network



相關地圖的中國界線畫法不代表官方立場

The drawing of the boundaries of People's Republic of China shown in relevant maps do not represent the official stance.

本資料 / 活動所表達的任何意見、發現、結論或建議，並不代表香港特別行政區政府、回收基金諮詢委員會或回收基金秘書處的意見。

"Any opinions, findings, conclusions or recommendations expressed in this material/ event do not reflect the views of the Government of the Hong Kong Special Administrative Region, the Advisory Committee on Recycling Fund or the Recycling Fund Secretariat.

# 計劃目的

## Project Objectives



推廣膠樽為可回收物料，  
提高香港收集及回收率

Popularise plastic bottles as recyclables,  
and improve collection and recycling  
rates in Hong Kong

評估及支援現時回收鏈，  
建立回收塑膠飲品樽的能力

Evaluate, support and build capacity in  
the current recycling chain for plastic  
beverage bottles.

在本港辨識及開發具有成本  
效益的塑膠飲品樽收集途徑

Identify and develop a cost-efficient  
collection pathways for plastic  
beverage bottles in Hong Kong

為生產者責任制提供政策建議，  
以及為其他飲品包裝提供參考

Provide policy recommendation on PRS  
and reference for other beverage  
packaging types

# 計劃運作概覽

## Overview of scheme operations



紙皮及廢紙

Carboard and waste paper

市場價值

Market Value

每公斤 2 至 4 毫

\$ 0.2 - 0.4 / kg

資助計劃

Subsidy schemes

每公斤 7 毫半<sup>1</sup>

\$0.75 / kg



金屬罐

Metal cans

每個 3 至 5 仙

(每公斤 2.4 - 4 元)  
\$0.03 - 0.05 / unit  
(\$2.4 - 4 / kg)

無

Nil



紙包飲品盒

Liquid cartons

\$0

每個 5 仙<sup>2</sup>

(每公斤 3.3 元)  
\$0.05 / unit  
(\$3.3 / kg)



塑膠飲品樽

Plastic beverage bottles

每個 1.5 仙

\$0.015 / unit

每個 5 仙

(每公斤 2 元)  
\$0.05 / unit  
(\$2 / kg)

<sup>1</sup> 環境保護署廢紙收集及回收計劃 (2020 年9 月) EPD - Waste paper collection and recycling services programme. (Sep 2020)

<sup>2</sup> 綠色力量－獲回收基金資助的紙包飲品盒回收計劃 (2020 年7 月) Green Power, with financial support of Recycling Fund. Drink Carton Recycling Campaign. (Jul 2020)

# 現金回贈運作 Flow of subsidies



回收商  
Recyclers

清潔員及前線收集員  
Cleaners & frontline collectors

「區區有樽賞」  
Neighbourhood Scheme

在回收基金的支持下  
With the support of the  
Recycle Fund



每個 HKD 0.085

(每公斤 HKD 3.4)

HKD 0.085 per bottle

(HKD 3.4 per kg)

每個 HKD 0.05

(每公斤 HKD 2)

HKD 0.05 per bottle

(HKD 2 per kg)

# 計劃參與者 Project participants

## 回收商 Recyclers



**35** 回收店  
Recycling shops



**9** 回收車  
Recycling trucks



**9** 快閃回收站  
Recycling pop-ups



涵蓋全港17區  
17 districts coverage

# 計劃參與者 Project participants



## 清潔員及前線收集員 Cleaners & frontline collectors

超過  
Over  
1000



清潔員  
Cleaners

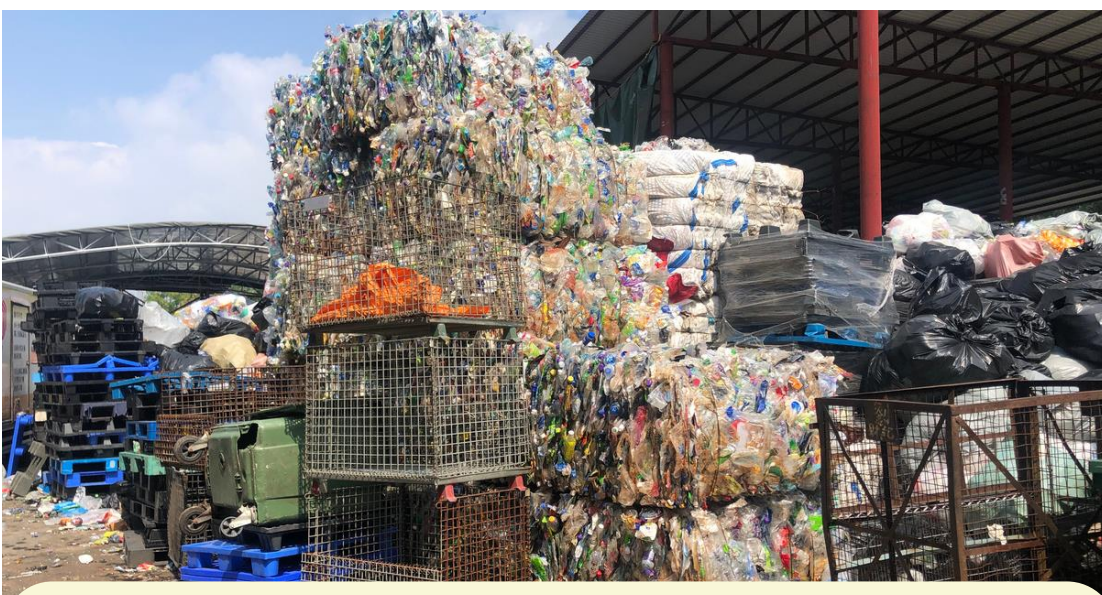


前線收集員  
Frontline collectors



# 計劃參與者 Project participants

## 回收處理場 Processing plants



4

已經審核而可靠的  
回收處理場

以處理計劃下回收的塑膠飲品樽

**Vetted and trusted  
recycling plants**

to process recovered bottles  
under the Scheme

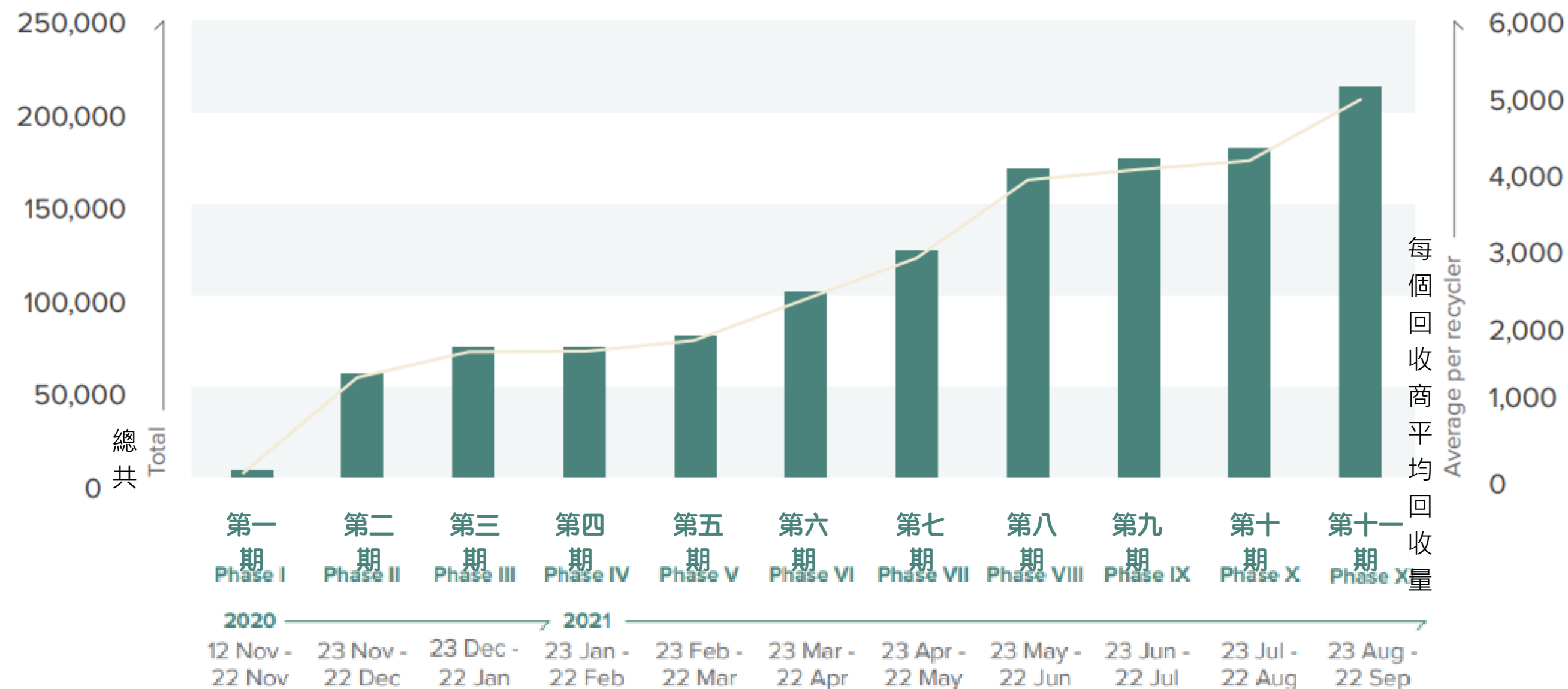


# 計劃成果 Project result



## 每月回收量

Monthly Volume (# bottles)



- 回收量穩定地上升  
Volumes kept rising steadily
- 最後一個月收集到超過210噸, 比上一個月多了20%  
In its last month, it collected over 210 tonnes, nearly 20% increase in collection over the previous month.
- 回收商與前線收集員仍有潛力  
The potential of participating recyclers and collectors was not yet fully tapped



# 計劃成果 Project result



In 11 months, a total of  
11個月，總共回收

# 49,800,000\*

## 個塑膠飲品樽

plastic beverage bottles recovered

### 為計劃原定目標的2.5倍多

more than 2.5 times  
the project recovery target



\* 此為以每個膠樽淨重量為25g的估算數值

Estimated figure based on calculations of 25g per bottle

# 計劃重點 Highlights



## 回收商與收集員組成強大網絡 A strong network of recyclers



回收商與清潔員及前線收集員有緊密的合作關係。在計劃推行初期，回收商積極與前線收集員推廣計劃，講解收購價錢、範圍以及要求等。不久的時間後，大量的收集員參與計劃，令到計劃回收量大幅上升。

Cleaners and frontline collectors have a close relationship with recyclers. Recyclers actively promote the project and provide details to purchase price, scope and requirement. It took a short time to engage cleaners and frontline collectors, which led to an increase of collection volume.

# 計劃重點 Highlights

## 回收量主要源至於清潔員 Volume came from cleaners



清潔員每當清潔大廈的時候，都能夠收集到大量的塑膠飲品樽。有回收商表示，一個清潔員平均每天可以收集到約 10 公斤的膠樽（即約 400 個膠樽\*）。

Cleaners easily have access to plastic bottles when cleaning the buildings. A cleaner can collect an average of 10 kg per day (around 400 units of plastic bottles), a recycler said.

\* 此為以每個膠樽淨重量為25g的估算數值  
Estimated figure based on calculations of 25g per bottle

# 計劃重點 Highlights

空間對於回收商十分重要 Space is important



有回收店在空間不足的情況下，將所收集的塑膠飲品樽放置於公眾地方，然而因此收到政府部門的投訴及警告。為免情況進一步惡化，他們無奈地退出計劃，停止回收塑膠飲品樽。

With limited storage space, a recycling shop leaves bulky plastic bottles in public space. They received complaints and warnings from a government department. They had to withdraw from the scheme to avoid situation worsening.

# 計劃重點 Highlights



## 位於屋苑的快閃回收站 Small MRFs located at housing estates



廢紙  
Paper

膠樽  
Plastic bottles

金屬  
Metal

有回收商於屋苑垃圾房旁營運快閃回收站。這種方式能夠充份及彈性地利用空間，位置亦易於辨認及方便尋找。這種設置因為接近廢物棄置源頭，往往帶來高效的交易。

This recycling pop-up operates outside the refuse collection point of a housing estate. It makes ample and flexible use of space, and is easy to recognize and access. Efficient transactions happens at this kind of set-up because it is close to material sources.



# 感謝你們的參與！

## Thank you for all your participation!

